

The Wrench

A Newsletter

for

ASME-UF



November 2006

American Society of Mechanical Engineers

www.mae.ufl.edu/asme

Welcome to the University of Florida's chapter of ASME! ASME is a professional organization that will help connect you to the greater Mechanical Engineering community beyond UF. Being involved in ASME can help bring you not only career advice, leadership experience, design projects, and new friends, but also a lot of fun! As the semester zooms by, don't forget the myriad opportunities ASME can provide! It is never too late to get involved. Come visit the new (or previously owned, one could say) Human Powered Submarine House in the Solar Park, swing by a company speaker, and enjoy some great food at a general body meeting!



YOUR OFFICERS

President:	Ryan Jones
VP External:	Mike Maxim
VP Internal:	Sarah Fisk
Treasurer:	Brian Rosenberg
BC Representative:	Joe Windle
Secretary:	Rochelle Willard
SSC Coordinator:	Megan Daly
Webmaster:	Jonathon Jeske
Outreach:	-Open-
Historian:	Ethan Burton
Newsletter:	Andrew Kobyljanec
Membership:	John Harrell
Publicity:	Raymond Sierra
Programs:	Marshal Thomson
SS Contact:	Yury Penske
IR Coordinator:	Chariz Figueroa
Fundraising:	Robert Oberlies
Advisor:	Dr Lear



NOVEMBER FEATURE

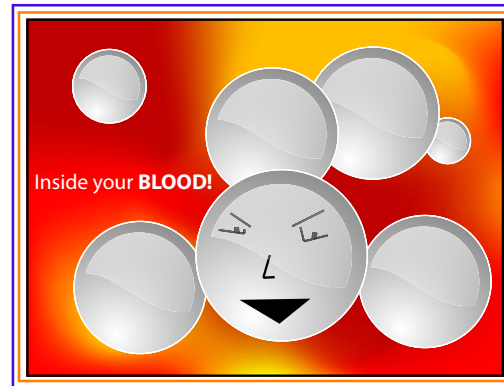


Illustration by Andy Kobyljanec

Halloween Special: Nanoparticles Infiltrating Your Blood

(Story from ME Magazine Online)

Pretty soon, a trip to the doctor's may be much scarier than it is today. Imagine the nurse walking into the examination room with a syringe... but that isn't medicine inside. Nanoparticles, thousands of them, are bristling to be first in line to infiltrate your blood! This is no horror story though, and a little mechanical engineering could put it in a doctor's office near you.

Fluid dynamics (perhaps even scarier than the average haunted house) control how and where these 20-100 nanometer sized balls

(cont. on page 2)



NOVEMBER AT A GLANCE

		1	2	3	4	
5	6	7	8	9	10	11
12	13	14	15	16	17	18
19	20	21	22	23	24	25
26	27	28	29	30		

- > General Body Meeting
- > Company Speakers:
Drilltech, Nov 14
- > HPV / HPS Meetings
- > Social Events
Tailgating (USC), Nov 11
Field Day, Nov 27

For more dates, times, and details, see page 2...



JOIN ASME!



There are many benefits to becoming a national member of ASME. For more information, flip the page!



Join ASME!

> There are many benefits to becoming a national member!

How do I join?

- > Go to ASME's student webpage:
www.asme.org/communities/students
- > A year's membership is only \$25

JOKE TIME!

A man is flying in a hot air balloon and realizes he is lost. He reduces height and spots a man down below. He lowers the balloon further and shouts, "Excuse me, can you tell me where I am?"

The man below says, "Yes, you're in a hot air balloon, hovering 30 feet above this field."

"You must be an engineer," says the balloonist.

"I am," replies the man. "How did you know?"

"Well," says the balloonist, "everything you have told me is technically correct, but it's of no use to anyone."

The man below says, "You must be in management."

"I am," replies the balloonist, "but how did you know?"

"Well," says the man, "you don't know where you are, or where you're going, but you expect me to be able to help.

You're in the same position you were before we met, but now it's my fault."

www.grahamasby.com

NOVEMBER AT A GLANCE

Upcoming Events in November:

- > November 7 : 6th General Body Meeting
-6:15 PM, MAE-B 211
- > November 11 : Tailgating BBQ (South Carolina)
-Time TBA, Plaza of the Americas
- > November 14 : Drilltech Tour
-Details TBA
- > November 18 : Tailgating BBQ (West Carolina)
-6:15 PM, MAE-B 211
- > November 21 : 7th General Body Meeting
-6:15 PM, MAE-B 211
- > November 7 : Field Day
-Details TBA, SW Rec Center

NOVEMBER FEATURE

Continued from page 1

move, and advances in precise delivery mechanisms can put medicine right where it needs to go--and reduce side effects immensely. Current chemotherapy techniques only deliver 1-10 parts per 100,000 of medicine to bad cells.

The bloodflow is a tiny and turbulent environment to navigate, and the delivery must be precise. However, as more and more advances in nano bio-mechanical technology is proving, these tasks are far from insurmountable. There is a long way to go before such an advanced system will be ready to combat cancer, but in the meanwhile make for perfect Halloween horror stories!

For more information, visit:

www.memagazine.org/contents/current/features/fantastic/fantastic.html

GET INVOLVED!

Get involved in one of ASME's design projects:

- > Human Powered Submarine
-Ryan Jones (rkj45@ufl.edu), Joe Windle (jchevy5@ufl.edu),
-Andy Kobyljanec (akobylj@ufl.edu), Chad Hodgkins
- (kahula@ufl.edu), Jonathon Jeske (jeske@ufl.edu)
- > Human Powered Vehicle
-Ryan Jones (rkj45@ufl.edu)
- > ASME Student Design Project

There are also several committees open to any ASME members:

- > Fund-raising Committee
-Brian Rosenberg (bjr86@ufl.edu)
- > Regional Student Conference Planning Committee
-Megan Daly (megs15@ufl.edu)

ANY QUESTIONS?

Stop by our lounge next to room 211 in MAE-B and ask an officer! You can also e-mail us at :

asme@grove.ufl.edu